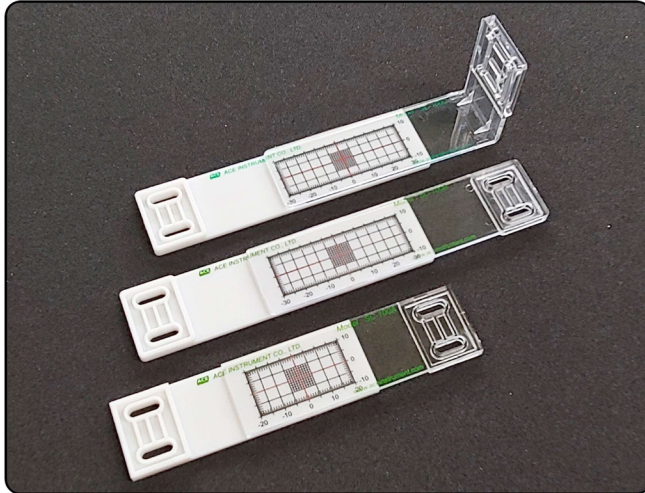


Plastic crack meters



Description

Plastic crack meter is suitable to use in a site which is not needed in high-accuracy instrumentation site with lower price of crack monitor instead of sensors.

Plastic crack meter is able to measure the crack by 1 set of 2 dimension plastic crack using a site which is needed to measure the crack continuously wall, road and crack of old building.

Other company's product is made of acrylic, so it is broken easily.

But because our plastic crack meter is made of poly carbonate, it is very strong as metal and never broken.

There are three types of plastic crackmeters SC-100: horizontal installation type SC-100A & SC-100B install on the surface, and right angle installation type SC-100C install on the corner.

Depend on installation environment and measurement range, select and use.



[SC-100A install on the surface]



[SC-100C install on the corner]

Specification

Model	SC-100A	SC-100B	SC-100C
Range	±20mm (left, right), ±10mm (up, down)	±30mm (left, right), ±10mm (up, down)	±30mm (left, right), ±10mm (up, down)
Resolution	1mm (grid type)		
Dimensions	32 × 102 × 5mm	32 × 132 × 5mm	32 × 132 × 55mm
	(2 quantity in a party)		
Adherence method	Bolt conclusion or Adherence epoxy-bond		
Material	Poly carbonate		
Installation	Horizontal	Horizontal	Right angle

Applications

- Measurement of crack at wall and road
- Measurement of decrepit building and crack propagation