

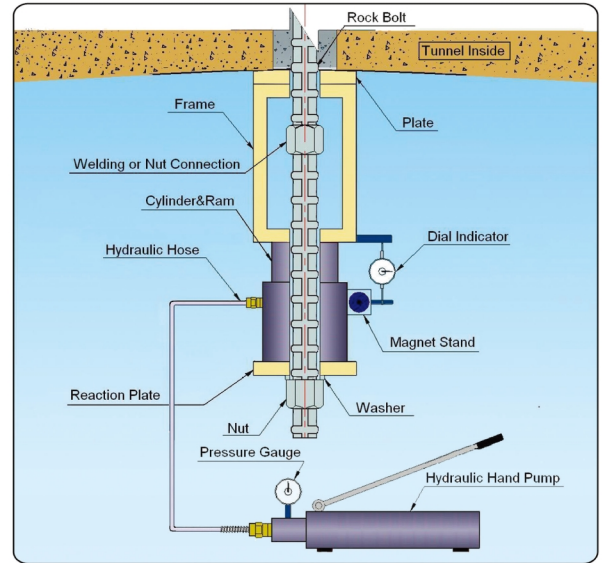
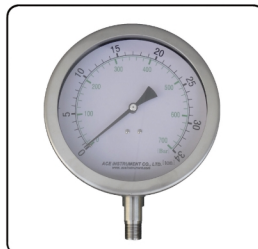
## Rock bolt pull tester set



### Description

Model 7200 is a **rock bolt pull tester set** to determine an appropriate length and type of fixing of rock bolt. Rock bolt pull tester set consists of portable hydraulic pump, hydraulic cylinder (often called RAM), cylinder frame and reaction plate, and magnet stand, which are attached with dial gage.

The large pressure gauge of the Model 7200 Rock bolt pull tester can display the load (ton) and pressure (bar) at the same time therefore, you do not need to convert it, and you can pull it out at the site while looking at the load.



[Installation of rock bolt pull tester set]

### [Rebar pull tester set]



Model 7201 **digital rebar pull tester set** is used to verify the fixing power and effectiveness of the constructed rebar. It is composed of hydraulic pump, hydraulic cylinder, digital indicator, reaction plate and wedge for fixing made to fit the size of rebar. In addition, the digital indicator use a large-capacity rechargeable battery, allowing continuous use for 10 hours on a single charge.

In order to digitally display the applied load(ton), an indicator and a pressure sensor for 700bar were applied. It is supplied calibrated in sets with hydraulic cylinders. When a user applies pressure with a hand pump and pulls out a rebar, the load applied to the rebar can be easily checked with a digital number in ton units.

A digital gauge for measuring displacement is optional. Therefore a dial gauge can be used and the digital system of load display can be applied to the model 7200 Rock bolt pull tester set.

### Specification

| Model | 7200                     | 7201   |  |
|-------|--------------------------|--|--|
| 1     | Portable pump            | Portable<br>Max. pressure : 700kg/cm <sup>2</sup><br>Weight : 10.9kg |  |
| 1-1   | Pressure meter Indicator | Analog sensor 700bar(34ton)<br>Digital sensor 700bar(60ton)          |  |
| 1-2   | Hydraulic hose           | Shield : neoprene rubber<br>Length : 3 m<br>Dimensions : Ø13×Ø15mm   |  |
| 2     | Cylinder (RAM)           | Portable<br>Hollowness type<br>Stroke : 63mm<br>Capacity : 32.6ton   | Portable<br>Hollowness type<br>Stroke : 50mm<br>Capacity : 60ton |
| 3     | Cylinder frame           | S45C processed by machine  |  |
| 4     | Reaction plate           | S45C processed by machine  |  |
| 5     | Magnetic stand & gage    | Dial gauge / Resolution : 0.01mm<br>(Optional : Digital gauge)       |  |